

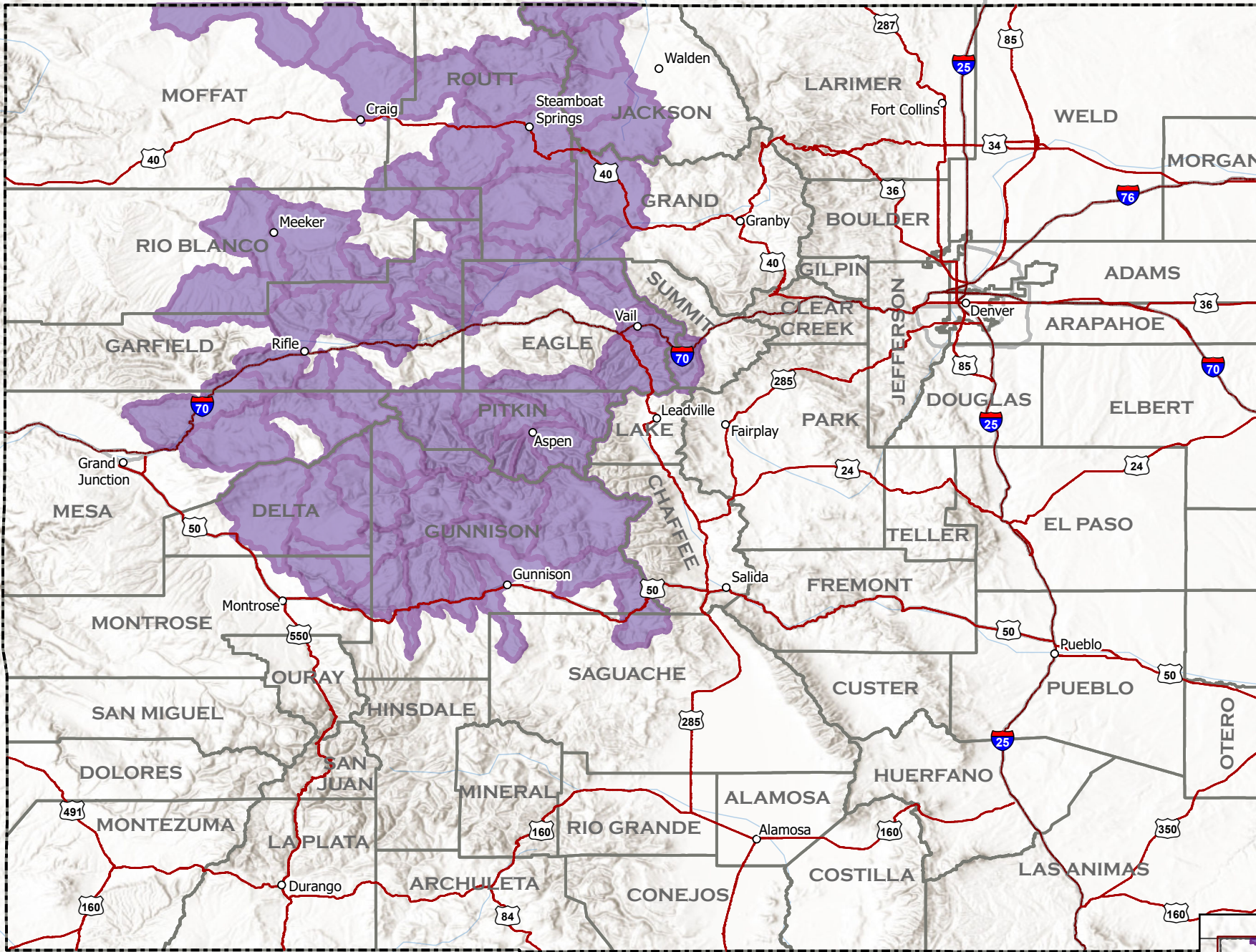



Current as of
May 26, 2026
Published May 27, 2026

**The minimum
mapping unit is the
local watershed.**

This map depicts
watersheds where collared
wolves in Colorado have
been from April 21, 2026 -
May 26, 2026. In order for
a watershed to indicate
wolf activity, at least one
GPS position was recorded
within the boundaries of the
watershed.

**Simply because a
watershed indicates
wolf activity, it does
not mean that a wolf
or wolves are present
throughout the entire
watershed.**

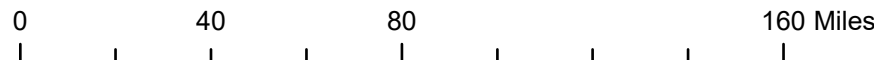






 Wolf activity in watershed

Collared Gray Wolf Activity April 21, 2026 - May 26, 2026

1:2,550,000

A watershed is a geographic unit that drains water into a specific waterbody. These are also known as Hydrologic Unit Codes (HUC). Information is shared at the HUC 10 level. More can be learned about HUC at <https://water.usgs.gov/themes/hydrologic-units/>.



-  Colorado Towns
-  Interstate
-  Highways
-  County Boundary
-  Colorado Boundary

